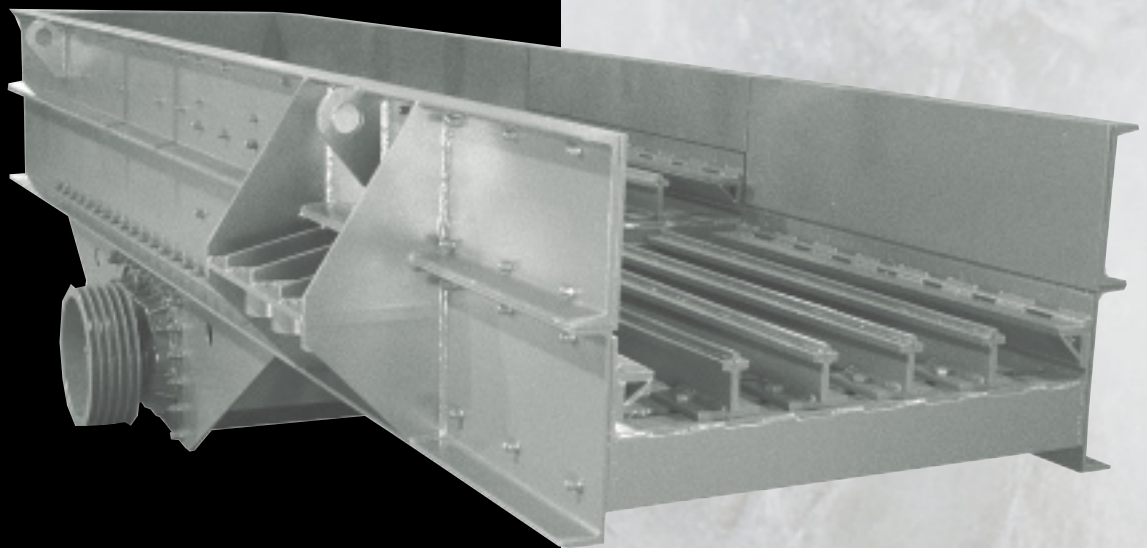
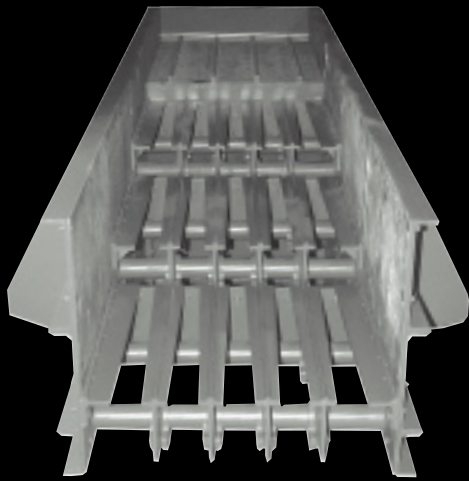


Vibrating Grizzly Feeders



Cedarapids

Reliable Heavy-Duty Grizzly Feeders



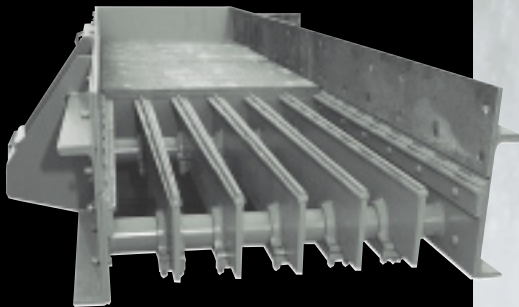
Vibrating grizzly feeders are the most accepted type of feeder in today's demanding market. This is especially true for primary crushing when handling of large, heavy rock demands a feeder that is able to withstand constant abuse. The Cedarapids vibrating grizzly feeder excels with superior performance in this type of application.

The Cedarapids vibrating grizzly feeder is the ideal choice for reliable, cost-effective performance. Cost of ownership has been driven down through new innovations and improved efficiencies, which goes directly to your bottom line.

A feeder performs three important functions: (1) takes the shock of heavy dumped loads without affecting the superstructure; (2) regulates feed rate to the plant; (3) the grizzly section separates material for product sizing such as "Rip Rap" and removes unwanted fines or bypasses smaller material around the crusher.

With its highly durable pan support system, Huck® bolted assembly, controlled vibrating action, adjustable timing gears, and grizzly bars designed to hold their setting, the Cedarapids vibrating grizzly feeder outperforms the competition day after day.

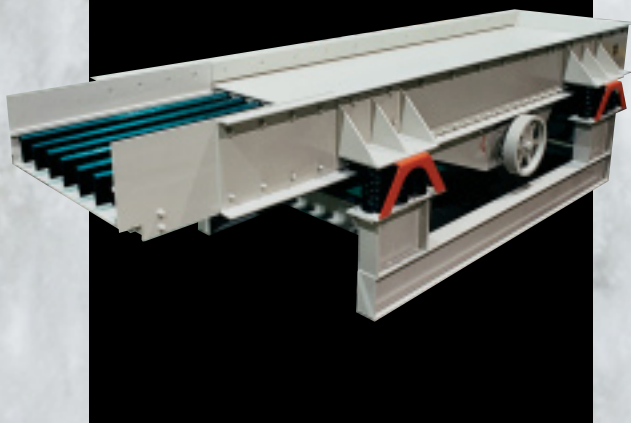
Cedarapids CD Series Feeders



CD Series Features

- Extra-heavy construction, deep side channels, extra-heavy cross member and fillerbar sub-deck for long, reliable life
- Thick abrasion-resistant or mild steel liners — optional stainless steel, alloy, or rubber replaceable liners available
- Fixed or adjustable grizzly openings
- Heavy coil spring support system
- Powerful oscillating twin-shaft assembly with a 7/16" (11.1 mm) stroke at 795 RPM — reduces material bridging and assures positive feed

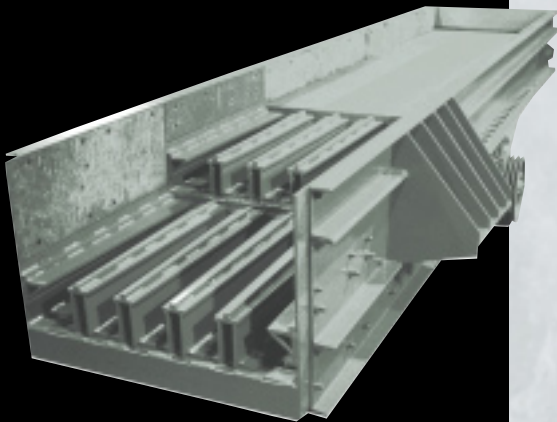
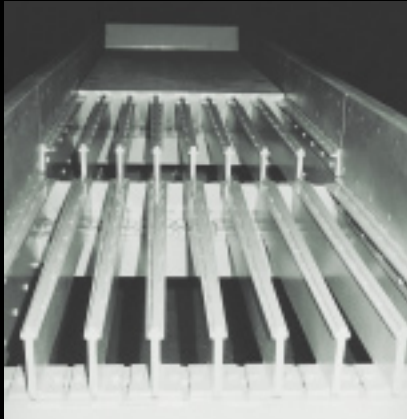
Cedarapids Advantage Series Feeders



Advantage Series Features

- Deep formed steel side sheets with high strength steel pan and tubular support weldment to provide for maximum durability without excess weight
- Standard 1/2" (12.7 mm) thick abrasion resistant pan and side liners; bolt-on design for easy maintenance
- An aggressive stroke up to 5/8" (15.9 mm) is generated with an optimum G-force to ensure proper stratification and forward motion
- In-line force transfer through the bearing coupled with slower shaft speeds provide extended bearing life
- Versatile bolt-together grizzly assembly with adjustable bar spacing, heavy-duty cast grizzly bars, with a variety of grizzly configurations

A Type and Size for Every Application



Engineering features of Cedarapids vibrating feeders assure reliability, ease of operation, application flexibility and high returns on your investment!

Grizzly feeders are commonly used in the feeding and scalping of ROQ (run of quarry) and ROM (run of mine) material prior to crushing and/or conveying. Maximum lump sizes can range up to 6' (1829 mm) cubes. The grizzly feeder is also widely used in the processing of "Rip Rap."

- Recommended for applications involving severe impact
- Performs scalping and feeding in a single unit
- Withstands impact loading from trucks, loaders, or whatever is used to feed it
- Available with one, two or three grizzly decks
- Grizzly deck can be sloped at discharge end
- Screen can be added underneath grizzly deck

A Few Reasons Why Cedarapids is the Preferred Feeder Line

Applications

Cedarapids feeders can be used in most feed applications whether it be to material handling equipment or direct to processing.

Huck® Bolt Construction

Major assemblies are Huck® bolted rather than welded to eliminate stress and facilitate replacement. Since Huck® bolts do not vibrate loose, they eliminate the need for periodic tightening.

Accurate, Even Feeding

The feeder's vibrating action combined with proper pan design assures an even feed with material evenly dispersed over the feeder pan. Result...better control with less production problems.

Pan Configurations

Cedarapids feeders can be furnished with a variety of pan configurations including flat bottom, curved bottom, tubular, grizzly, perforated plate, single surface, multiple surface, step decks, end discharge, and intermediate discharge to suit the application requirement.

Quiet Operation

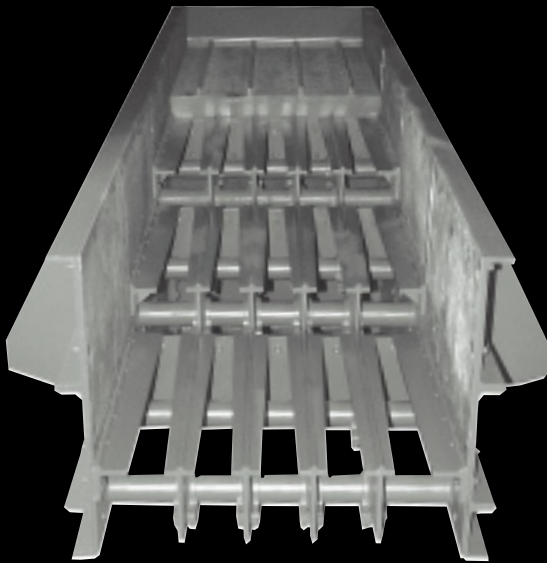
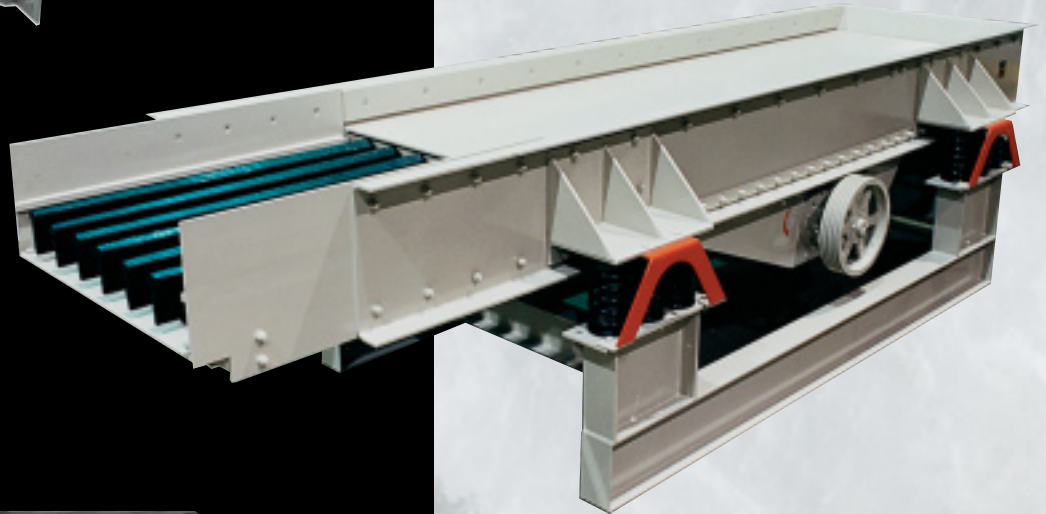
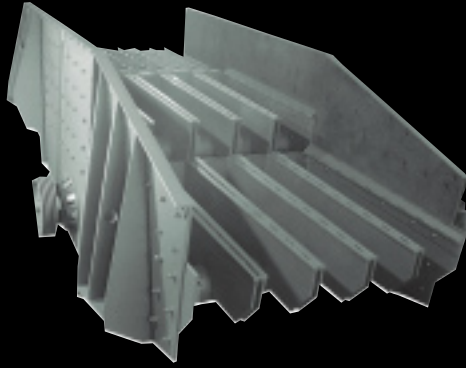
The feeder's design holds noise levels to a minimum. Naturally, the type of material being processed will affect the noise level.

Factory-Tuned

All feeders are factory-tuned to compensate for the slowing or dampening effects of head loads, assuring a consistent, steady product feed.

Cedarapids Inc
909 17th Street NE
Cedar Rapids IA 52402 USA

Telephone 319 363 3511
1 800 821 5600
Fax 319 399 4871
www.cedarapids.com



*Cedarapids...
Providing Equipment
that is*

*Available
&
Cost Effective*

 **Cedarapids**
A Terex Company

Design features may be covered by patents issued and/or patents applied for.
Design and specifications subject to change without notice.
Bulletin VGF-1 (5/00)